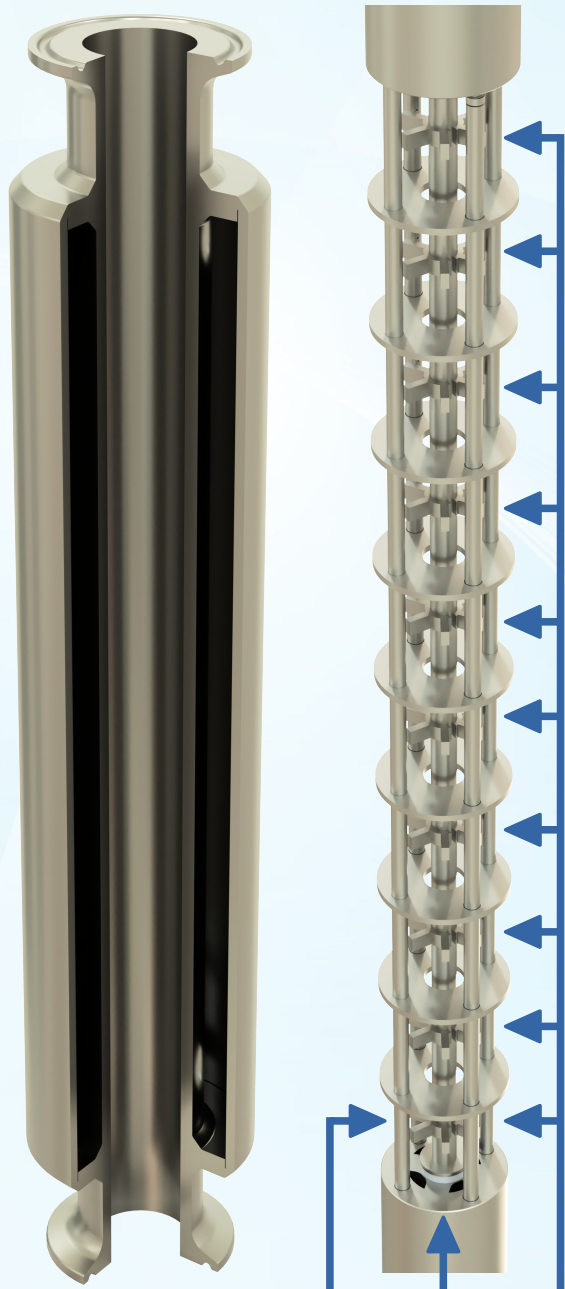


SABRe: 10 CSTRs in one for scalable multi-purpose flow chemistry

STOLLI
— chem —



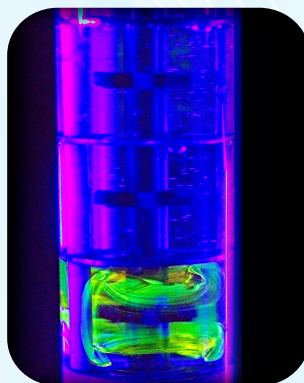
Jacketed vessel for heating or cooling.

Wide process conditions

-40 to +200 °C
0 to 100+ bar

10 CSTRs in one
3 addition points
- any CSTR or
- several CSTRs
Variety of mixers and options

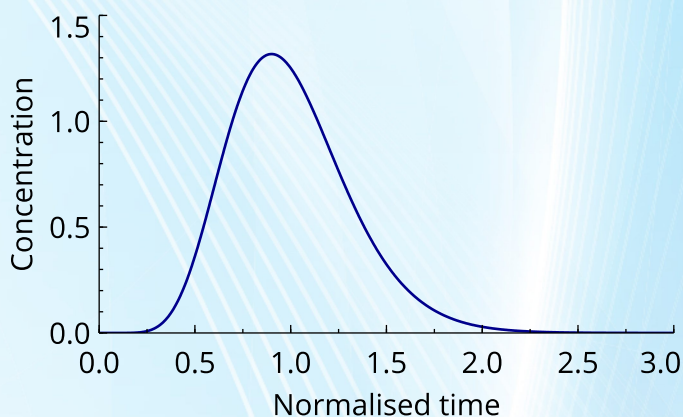
Precision process control for mixing, residence time, and temperature



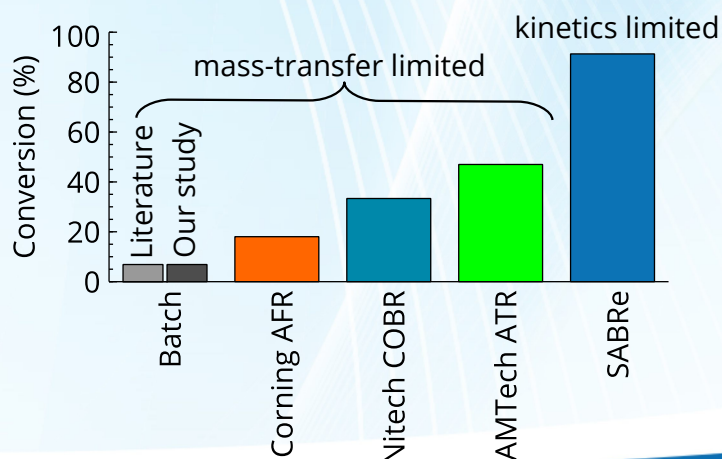
Heat transfer on par with plate reactors

Heat transfer coefficients of $700 - 1,500 \text{ W m}^{-2} \text{ K}^{-1}$, close to that of micro-reactors.

Performance of 10 ideal CSTRs under most conditions. Precision of reaction timing control for higher throughput and higher quality.



Best in class mixing for dramatically higher throughput and less by-product formation.



Flow Chemistry from grams to kilo-tonnes

stolichem@stolichem.com

SABRe: 10 CSTRs in one for scalable multi-purpose flow chemistry

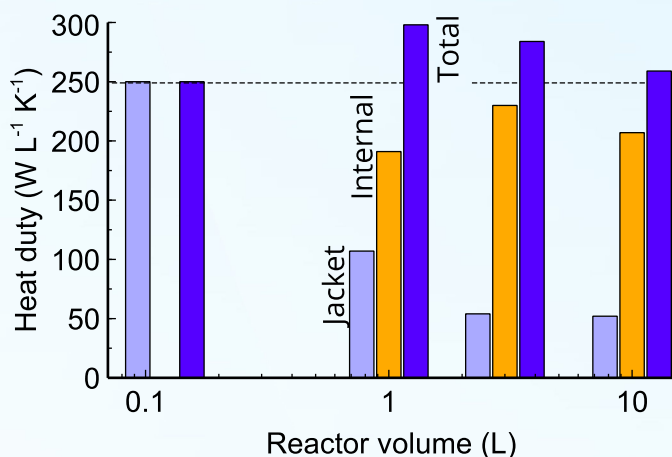
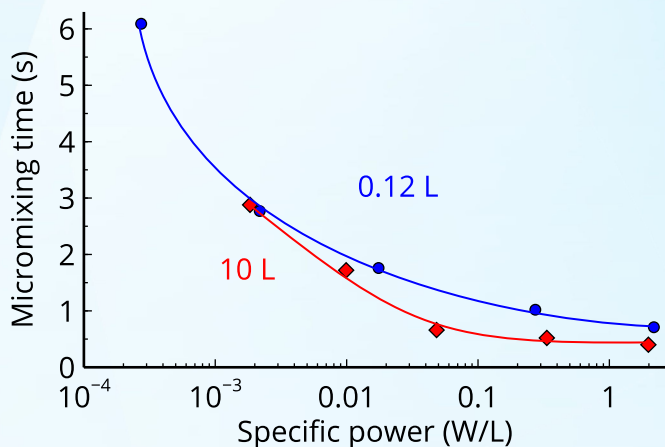
STOLI
— chem —

One reactor, many applications:

Suitable for solids, gases, non-viscous, and viscous liquids

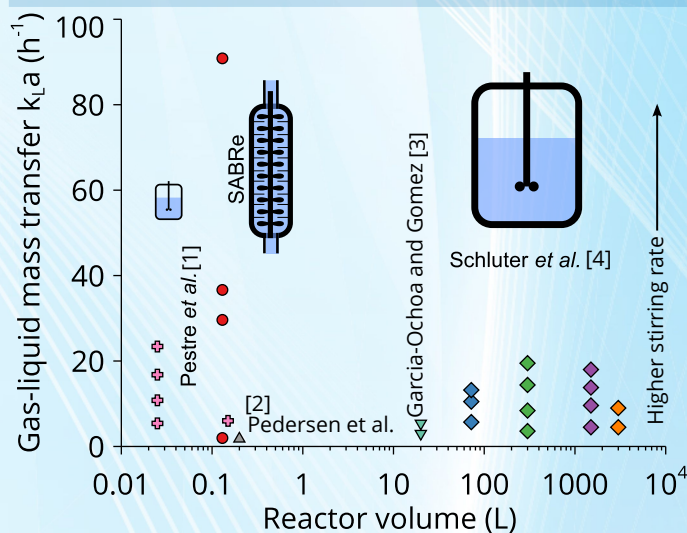
- Organometallics
- Process intensification
- Material synthesis (solid)
- High-viscosity chemistry
- Polymerisation
- Hydrogenation
- Hazardous chemistry
- Reaction cascades

Seamless scalability. From 30 mL to 100 L reactor volume with the same mixing & heat transfer rates.

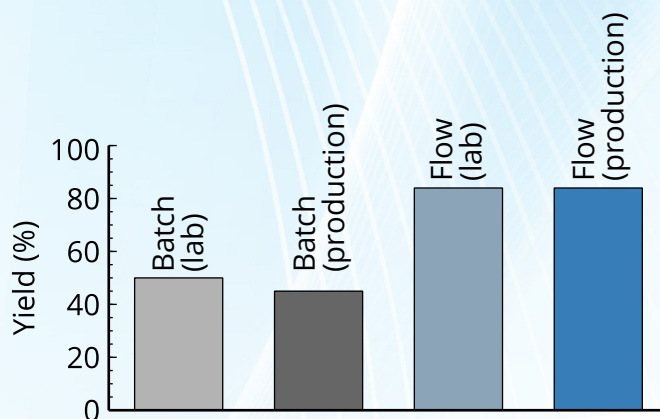


About the company. A UK-based company established in 2016 as a Warwick University spinout. We are trusted by major pharma, CDMOs, aerospace, petrochemical, fine chemical, materials, and many other companies for catalysis, process development, and flow chemistry equipment.

Predictable and Scalable. Each comprising CSTR is described with well-known engineering correlations.



1,000-fold intensification. Demonstrated multi-ton production in flow reactors that improve yield, quality, and replace batch with 1,000-fold smaller flow reactors.



Flow Chemistry from grams to kilo-tonnes

stolichem@stolichem.com